



Estate Agents



Auctioneers

Wentworth Avenue, Southbourne, Bournemouth, BH5 2ED

£1,700 – Per Calendar Month

Three Double Bedroom First Floor Apartment | Entrance & Landing | 16' x 14' Reception Room | Modern Kitchen Modern Bathroom | Private Rear Garden | Available Now For Long Term Let

This lovely three-bedroom apartment is located on the first floor, conveniently positioned near Southbourne Grove, the beautiful beaches, and the clifftop. This lovely three-bedroom apartment is located on the first floor, conveniently positioned near Southbourne Grove, the beautiful beaches, and the clifftop. The property is well-maintained throughout and features spacious rooms with modern conveniences, including double glazing and gas central heating with a boiler. It includes a 16-foot lounge, three double bedrooms, a modern kitchen, a contemporary bathroom, and a private rear garden.

Entering through its own private entrance, you'll find a turning staircase leading to the first floor, complete with a feature-stained glass window and a spacious landing. The front of the apartment includes two large bedrooms; the 16' master bedroom features a bay window, while the second bedroom also has a bay window, and both have ample space for wardrobes.

Additionally, there is a separate cloakroom and a bathroom equipped with a modern vanity sink unit, a bath, and an airing cupboard. The kitchen offers an extensive range of wall and base units with contrasting work surfaces, a range cooker, a built-in fridge/freezer, a dishwasher and a washing machine. The third bedroom, located at the rear, overlooks the garden.

The 16' x 14' reception room boasts a feature fireplace and a large bay window facing the rear. The secluded rear garden features mature borders and a lawn. On-street parking is available nearby.

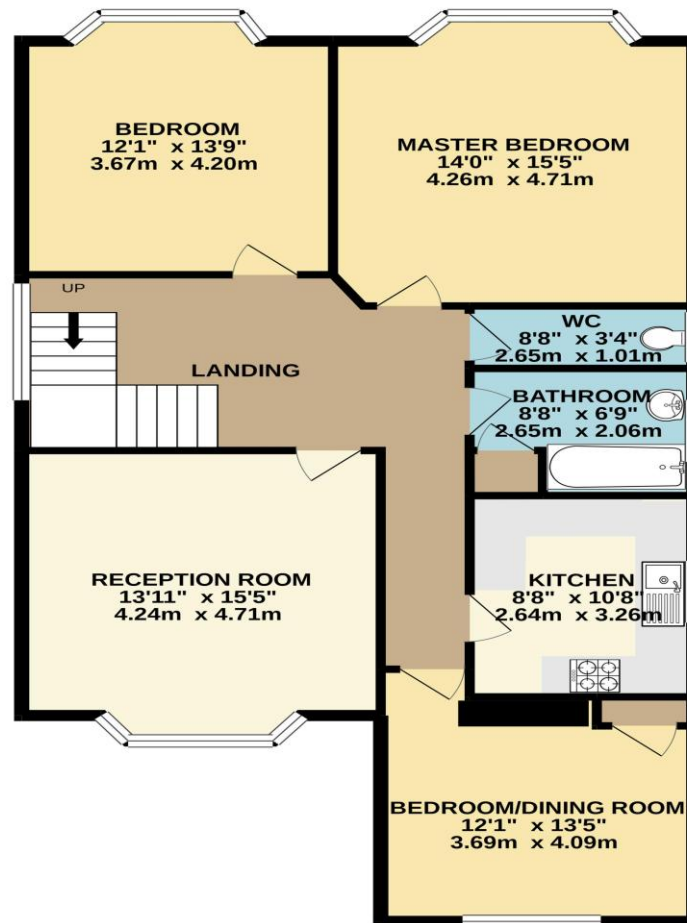
AVAILABLE NOW FOR LONG-TERM RENT - This property is ideal for professional working individuals.

Council Tax Band: C
Monthly Rent: £1,700 per calendar month
Deposit: £1,961.53





FIRST FLOOR
1087 sq.ft. (100.9 sq.m.) approx.



TOTAL FLOOR AREA : 1087 sq.ft. (100.9 sq.m.) approx.

Whilst every attempt has been made to ensure the accuracy of the floorplan contained here, measurements of doors, windows, rooms and any other items are approximate and no responsibility is taken for any error, omission or mis-statement. This plan is for illustrative purposes only and should be used as such by any prospective purchaser. The services, systems and appliances shown have not been tested and no guarantee as to their operability or efficiency can be given.
Made with Metropix ©2020

Disclaimer These particulars, whilst believed to be accurate are set out as a general outline only for guidance and do not constitute any part of an offer or contract. Intending purchasers should not rely on them as statements of representation of fact, but must satisfy themselves by inspection or otherwise as to their accuracy. We have not carried out a detailed survey nor tested the services, appliances and specific fittings. Room sizes should not be relied upon for carpets and furnishings. The measurements given are approximate. No person in this firm's employment has the authority to make or give any representation or warranty in respect of the property.

Richard Godsell – Estate Agents – Auctioneers

3 Southbourne Grove • Southbourne • Bournemouth • BH6 3RE

Tel: 01202 424214 | Email: southbourne@richardgodsell.com

Offices at

Southbourne • Christchurch • London

www.richardgodsell.com

